



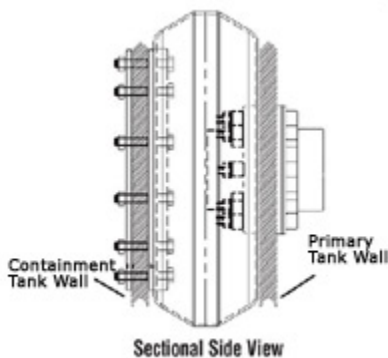
Polyethylene Double Wall Tanks and Polyethylene Containment Basins



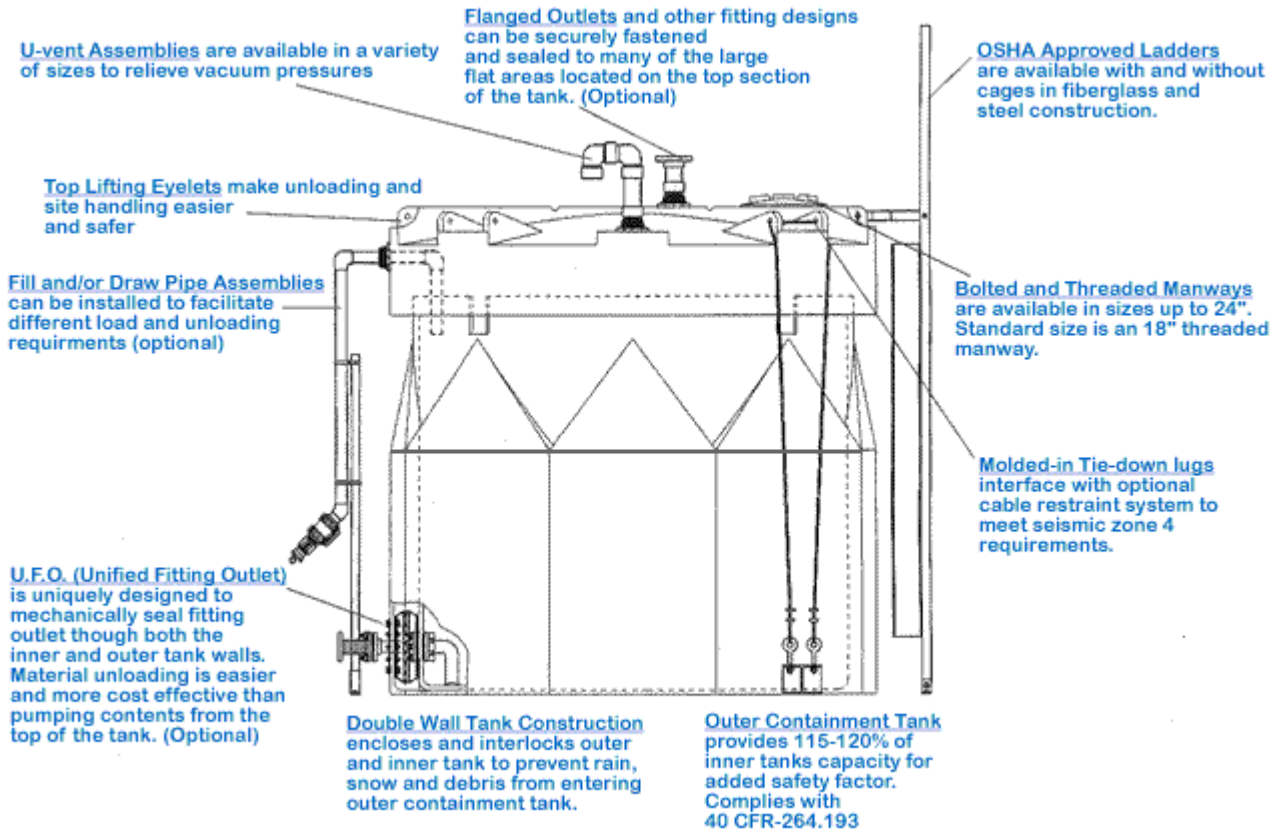
Our revolutionary Double Containment System is designed to alleviate the ever-changing environmental and safety concerns regarding bulk chemical storage and containment for the 21st century. Call 215-258-5602

Our unique tank-in-a-tank design (available in XLPE and HDLPE) enables users and specifiers to incorporate advanced performance and safety features on a bulk handling system, which provides total containment protection. Sierra's double-wall construction is complete enclosed so that external matter, such as dust, rain and snow is prevented from collecting in the outer containment tank.

Besides delivering unparalleled performance benefits, Sierra Sales' Double wall Systems also contribute to your company's bottom line by significantly reducing installation and procurement cost. Most assemblies can be shipped fully assembled on either a standard or wide load flatbed trailer, which reduces comparable costs by an average of 35 percent.



Part No.	Gallons	Diameter	Height	Manway/Fill Diameter
5040---	550	76"	65"	18"
5470---	1,100	76"	104"	18"
5490---	1,550	76"	136"	18"
5570---	2,000	102"	103"	18"
5580---	2,500	102"	122"	18"
5590---	3,000	102"	142"	18"
5600---	3,500	102"	158"	18"
5610---	4,000	102"	178"	18"
5620---	4,500	102"	197"	18"
5630---	5,000	102"	216"	18"
5660---	5,500	120"	172"	18"
5670---	6,500	120"	199"	18"



Sierra Sales' smaller dual containment tanks provide added safety and environmental protection in more confined or remote storage locations. The advance double-wall tank design is enclosed to prohibit foreign matter from entering the secondary containment tank and a unique octagonal shape provides optimal spacing

and sealing surface for the industry's most reliable transition fitting.

DUAL CONTAINMENTS - MINI BULK					
Part No.	Style	Gallons	Diameter	Height	Manway/Fill Diameter
1000200	DCT	35	22"	36"	6"
1000300	DCT	60	26"	41"	14"
5980---	DCT	120	34"	49"	14"
1000400	DCT	150	34"	60"	14"
1000500	DCT	275	47"	60"	14"
1000600	DCT	360	53"	60"	14"
100800	DCT	500	53"	79"	14"

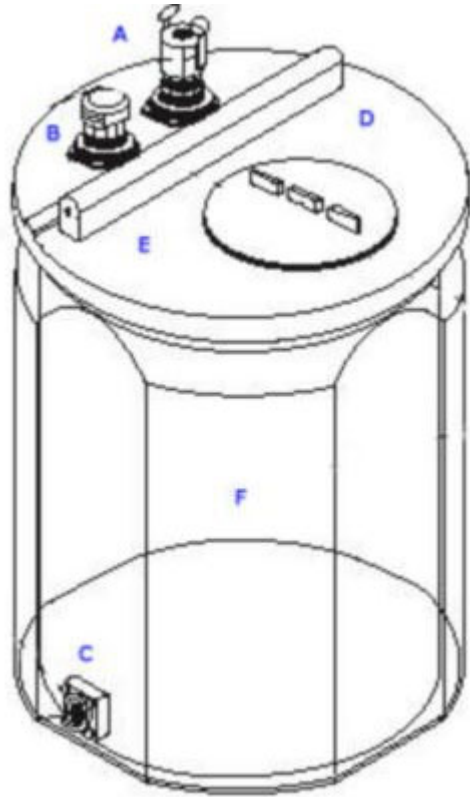


Diagram Legend

Enclosed Double Wall Tank prevents foreign matter from entering outer containment tank.

A. Top Draw-Tube Assembly enables material contents to be safely dispensed from the top of the tank. (optional)

B. 2" Vent provides vacuum relief for interior tank. (optional)

Available in **XLPE and HDLPE** resin packages.

C. Transition Fitting allows side safe installation and long term sealing power through both walls of your dual containment tank. (optional)

Primary Tank is available in both closed and open top tank designs.

D. Large Flat Surface Area provides ample space for a variety of fitting sizes and styles.

Two Tanks within one design provide double wall protection.

E. Rib Reinforced Flat Top Design provides ample surface space for chemical feed pump mounting.

F. Narrow Diameter provides location versatility in that it can fit through most any doorway.

Secondary Containment Tank provides 120% of inner tanks' capacity. Complies with CFR-264-193.

All Other Industrial Product Fittings and accessories are available wherever applicable.